

# Inside **CAREER** SERVICES

**9 out of 10**

**UNDERGRADUATES** secured post-graduate plans within six months after graduation

**95%**

of participants agree: our **CAREER PROGRAMS** enhanced their career, personal, or professional development

**\$200,000+**

awarded annually to **STUDENTS** to offset unpaid, high-quality **INTERNSHIPS** related to academic & career goals

**800+**

**EMPLOYERS** engaged on & off campus

**34,000+**

**GLOBAL CONNECTIONS** in GW Alumni LinkedIn group

**GW'S** NATIONALLY RECOGNIZED **CAREER SERVICES TEAM**

EMPOWERS STUDENTS TO DEVELOP THEIR

**CAREER PLAN**

AND PREPARES THEM TO

**MAXIMIZE THEIR**

**YEAR-ROUND ACCESS TO**

**PROFESSIONAL OPPORTUNITIES**



**OUR EXPERT CAREER COACHES**



**GUIDE STUDENTS TO**

**REFLECT & BUILD ON THEIR**

**UNIQUE GW EXPERIENCES**

**OUR SPECIALIZED EMPLOYER DEVELOPMENT & STUDENT EMPLOYMENT TEAMS**



**OPEN DOORS TO TOP-TIER ORGANIZATIONS**



Center for  
Career Services

For more information:

[gwcareercenter@gwu.edu](mailto:gwcareercenter@gwu.edu)

[careerservices.edu.gwu](http://careerservices.edu.gwu)

THE GEORGE  
WASHINGTON  
UNIVERSITY

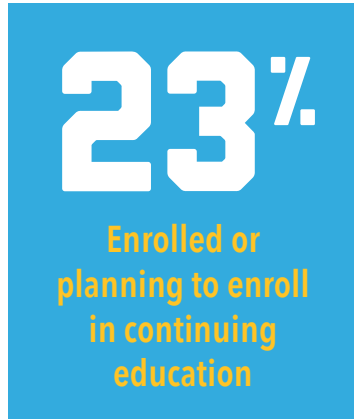
WASHINGTON, DC

# CLASS OF 2017 POST-BACCALAUREATE FIRST DESTINATION PROFILE

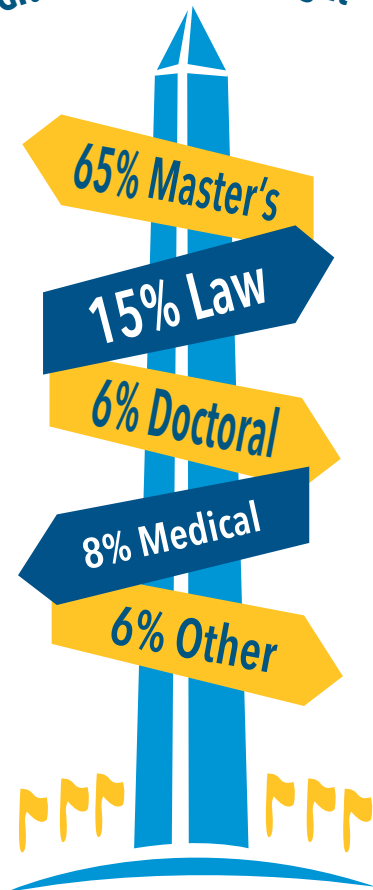
88% of the Class of 2017 (N=2,269) through six months after graduation.



## 89% Employed, Continuing Education or other Engagements\*

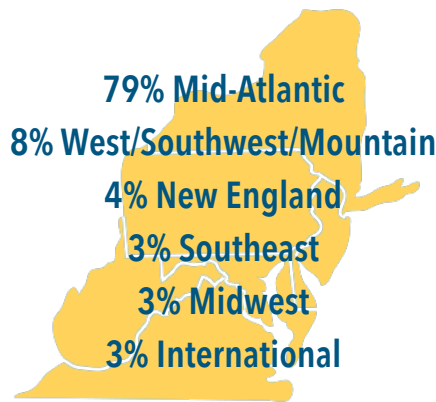


### Graduate Degree Sought

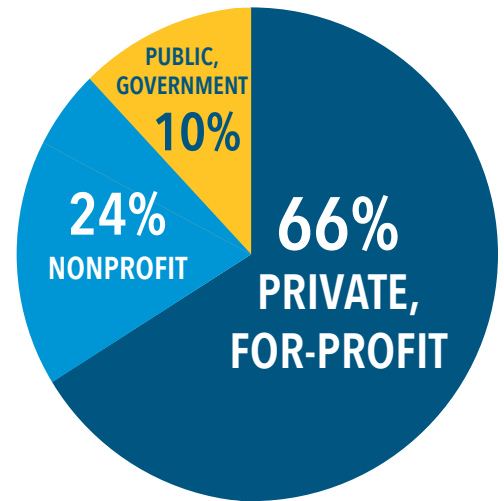


## FULL TIME EMPLOYMENT

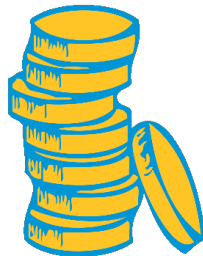
### LOCATION



### SECTOR



### SALARY



|                         |                         |
|-------------------------|-------------------------|
| <\$30,000 (9%)          | \$50,000-\$59,999 (21%) |
| \$30,000-\$39,999 (12%) | \$60,000 +(32%)         |
| \$40,000-\$49,999 (26%) |                         |

\* Note: Percentages may not always add up to exactly 100% due to rounding

Produced by the Office of Survey Research & Analysis April 2018  
For more detailed career outcomes, visit [go.gwu.edu/gradoutcomes](http://go.gwu.edu/gradoutcomes)