

Inside **CAREER** SERVICES

9 out of **10**

UNDERGRADUATES secured post-graduate plans within six months after graduation

65%

of students participated in an **INTERNSHIP**

\$120,000+

awarded annually to **STUDENTS** to offset unpaid, high-quality **INTERNSHIPS** related to academic & career goals

43,000+

EMPLOYERS engaged on Handshake

7,000+

members of the **GW Career Connect Alumni Network** available to assist current students

GW'S **NATIONALLY RECOGNIZED CAREER SERVICES TEAM**

EMPOWERS STUDENTS TO DEVELOP THEIR

CAREER PLAN

AND PREPARES THEM TO

MAXIMIZE THEIR

YEAR-ROUND ACCESS TO

PROFESSIONAL OPPORTUNITIES



OUR EXPERT CAREER COACHES



GUIDE STUDENTS TO

REFLECT & BUILD ON THEIR

UNIQUE GW EXPERIENCES

OUR SPECIALIZED EMPLOYER DEVELOPMENT & STUDENT EMPLOYMENT TEAMS



OPEN DOORS TO TOP-TIER ORGANIZATIONS



Center for
Career Services

For more information:

gwcareercenter@gwu.edu

careerservices.edu/gwu

THE GEORGE
WASHINGTON
UNIVERSITY

WASHINGTON, DC

70% of the Class of 2022 (N=2,923) through six months after graduation.



96% Employed, Continuing Education or other Engagements*

68%

Employed full-time or part-time

(including fellowship, internship, self-employed)

27%

Enrolled or planning to enroll in continuing education

2%

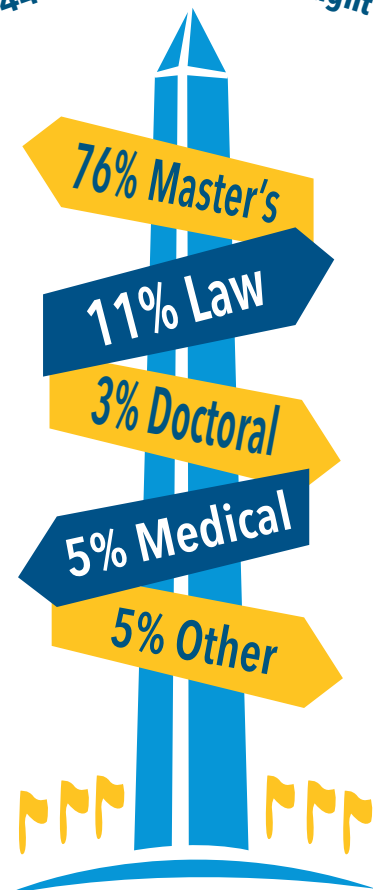
Engaged in other activities

(including military, community service, travel)

4%

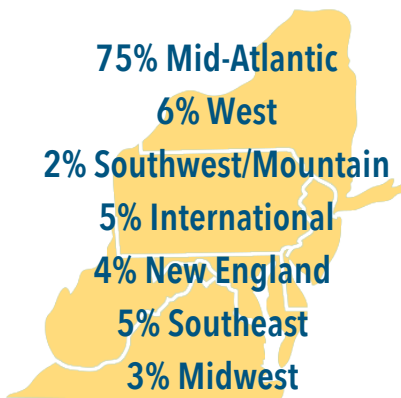
Seeking Employment

544 Graduate Degrees Sought



FULL TIME EMPLOYMENT

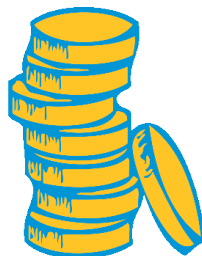
LOCATION



TOP EMPLOYMENT INDUSTRIES

- Healthcare
- Financial Services
- Business Consulting and Services
- Law Practice
- IT Services and Consulting
- PR & Communications

SALARY



<\$40,000 (13%)	\$60,000-\$69,999 (17%)
\$40,000-\$49,999 (17%)	\$70,000-\$79,999 (18%)
\$50,000-\$59,999 (18%)	\$80,000 + (17%)

* Note: Percentages may not always add up to exactly 100% due to rounding

Produced by the Center for Career Services and the Office of Survey Research & Analysis - Sept 2023